



RE/MAX

PROPERTY HUB



7 Shackleton Close, Harwich, CO12 3UD

Price £280,000

**** No Onward Chain **** Nestled in a peaceful cul-de-sac, this well presented detached bungalow is available now and offers 2 well sized bedrooms, lounge, kitchen, bathroom, garage & driveway offering off-road parking.

Externally, a pleasant low maintenance and un-overlooked landscaped garden to enjoy!

Council Tax: C
Awaiting Updated EPC
Gas Central Heating - Combi Boiler (2019)

Entrance Hall

With doors to all rooms, airing cupboard and loft access hatch

Lounge 15'9" x 10'10" (4.82 x 3.31)

With UPVC sliding patio doors and window to rear overlooking the garden

Kitchen 10'7" x 9'1" (3.24 x 2.77)

Fitted with a matching range of wall and base units, Built in double oven (Bosch) with extractor hood, ceramic hob, rolled edge work surfaces with upstand, ceramic sink/drainers with mixer tap, integrated fridge and freezer, space for washing machine, window to front aspect

Bedroom 1 11'9" x 9'8" (3.59 x 2.95)

With one wall of fitted wardrobes, window to rear aspect

Bedroom 2 10'4" x 8'6" (3.16 x 2.61)

With window to front aspect

Bathroom 6'9" x 5'6" (2.06 x 1.68)

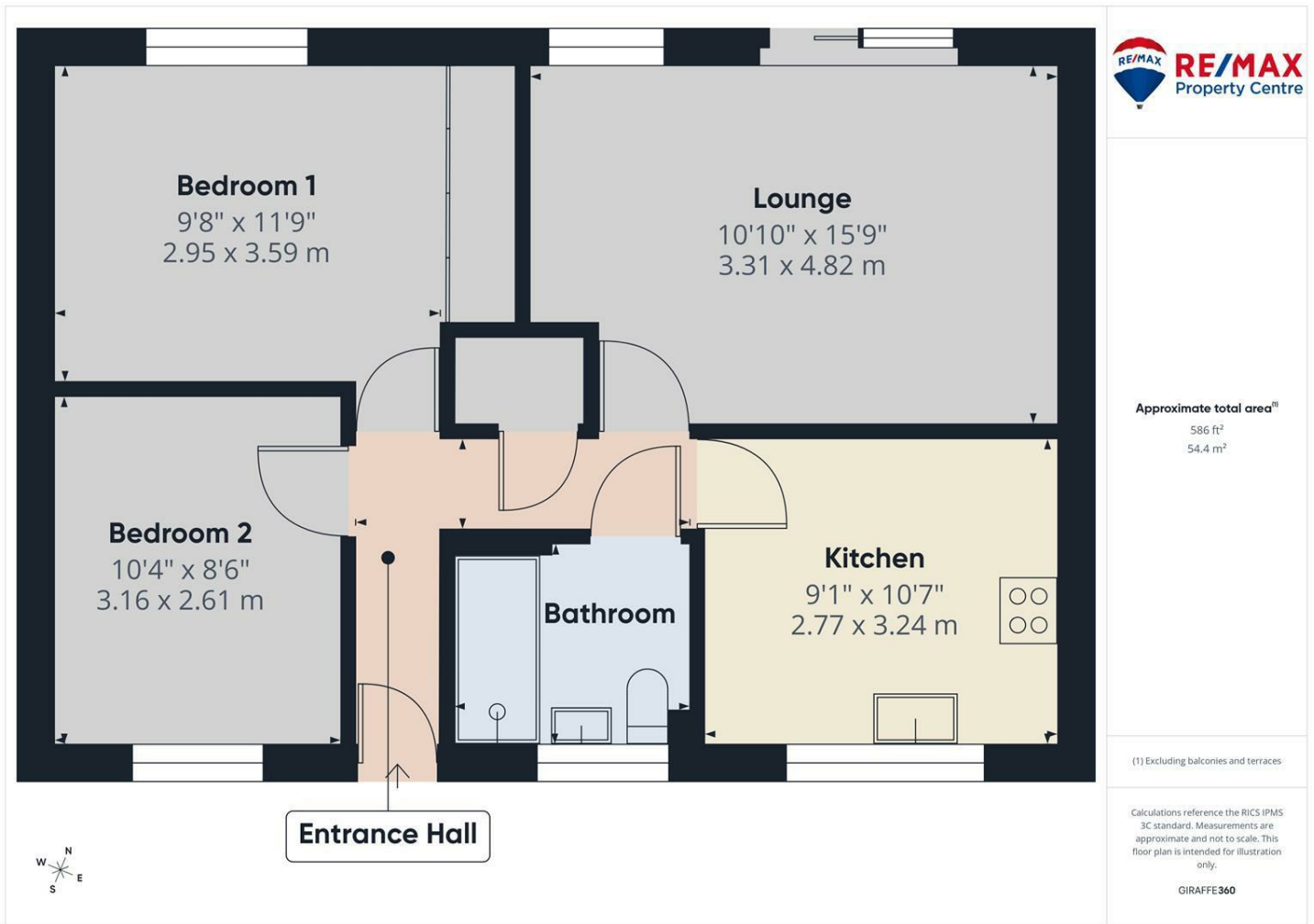
Modern suite comprising:- double walk-in shower with glass screen, pedestal wash basin, low level WC, heated towel radiator, part tiled walls and opaque window to front aspect

Outside Areas:-

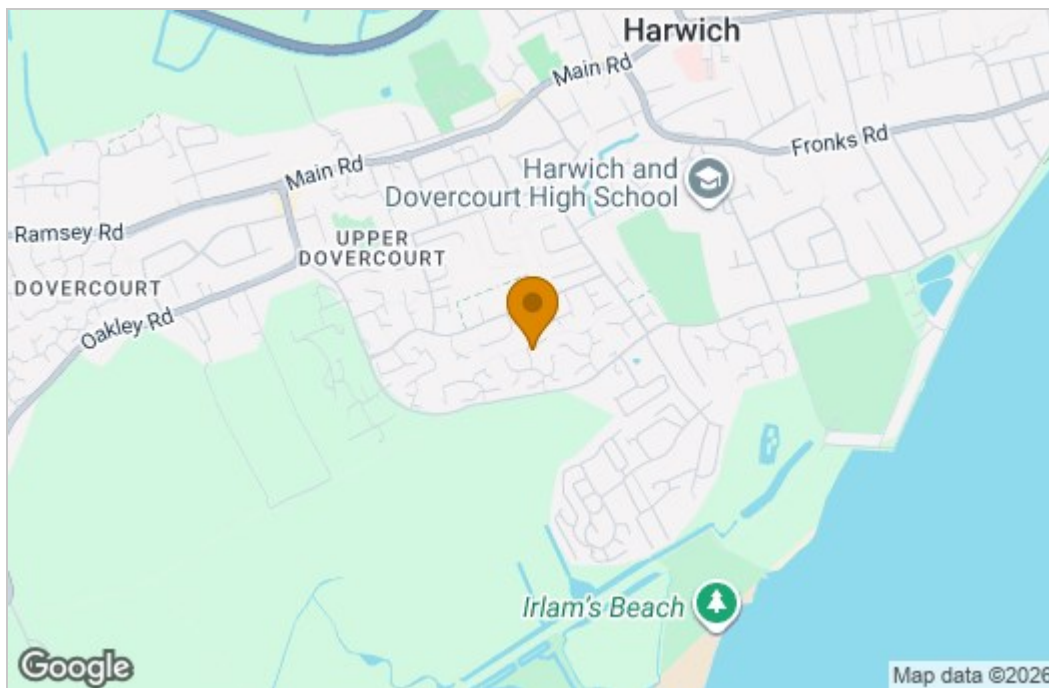
To the front of the property a block paved driveway allowing off road parking for 2-3 vehicles, a single garage with electric door and personnel door to the rear garden

The generous rear garden is un-overlooked and has been pleasantly landscaped with an array of attractive plants and shrubs with a central feature flower bed, block paved for easy maintenance

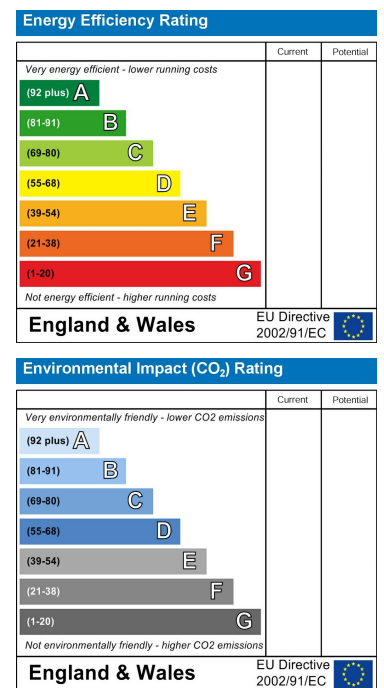
Floor Plan



Area Map



Energy Efficiency Graph



These particulars, whilst believed to be accurate are set out as a general outline only for guidance and do not constitute any part of an offer or contract. Intending purchasers should not rely on them as statements of representation of fact, but must satisfy themselves by inspection or otherwise as to their accuracy. No person in this firm's employment has the authority to make or give any representation or warranty in respect of the property.