



RE/MAX
North

9 Owen Street, Manchester, M15 4TP

Asking price £420,000





RE/MAX
North

Asking price £420,000

9 Owen Street

Manchester, M15 4TP

Located in the iconic Deansgate Square, this beautifully presented 13th floor corner apartment offers bright, modern city living with stunning skyline views.

The property features a spacious open-plan living and kitchen area surrounded by floor-to-ceiling windows, creating an abundance of natural light throughout. There are two well-proportioned double bedrooms, including a generous principal bedroom with ensuite shower room, alongside a stylish main bathroom. The apartment also benefits from excellent built-in storage and has been very well maintained by the current occupants.

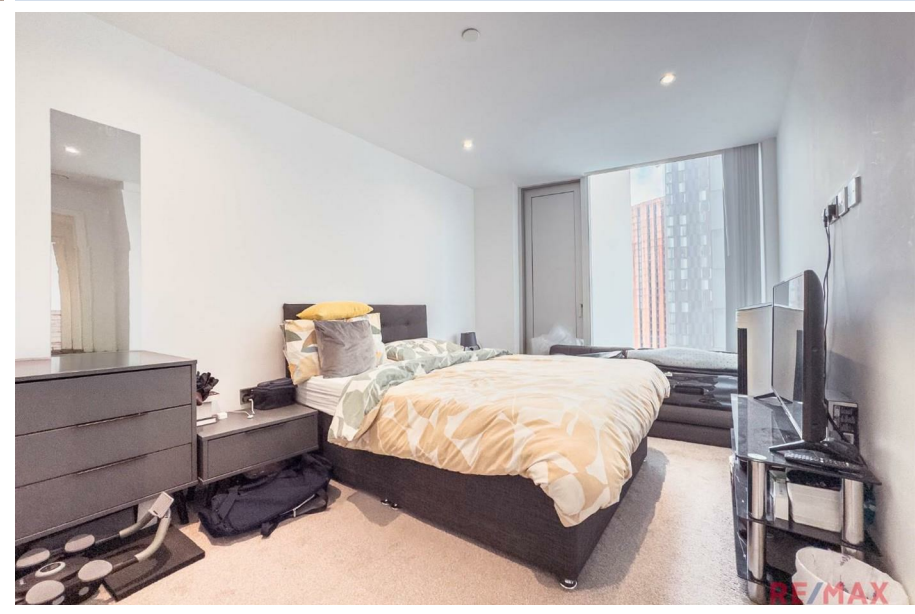
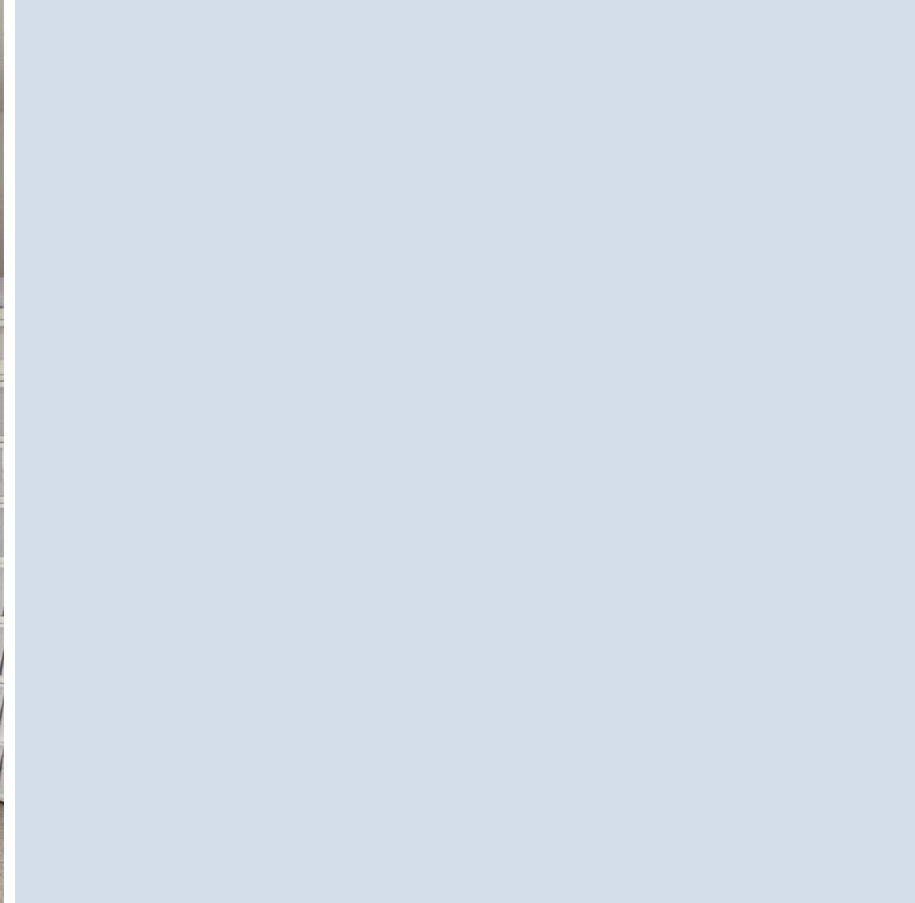
Residents of Deansgate Square enjoy access to some of Manchester's finest residential amenities, including a roof garden, co-working spaces, 24-hour concierge, indoor swimming pool & jacuzzi, sports hall and tennis court.

Ideally positioned in the heart of the city, Deansgate's restaurants, bars, shops and transport links are all just moments away.

Early viewing is highly recommended.

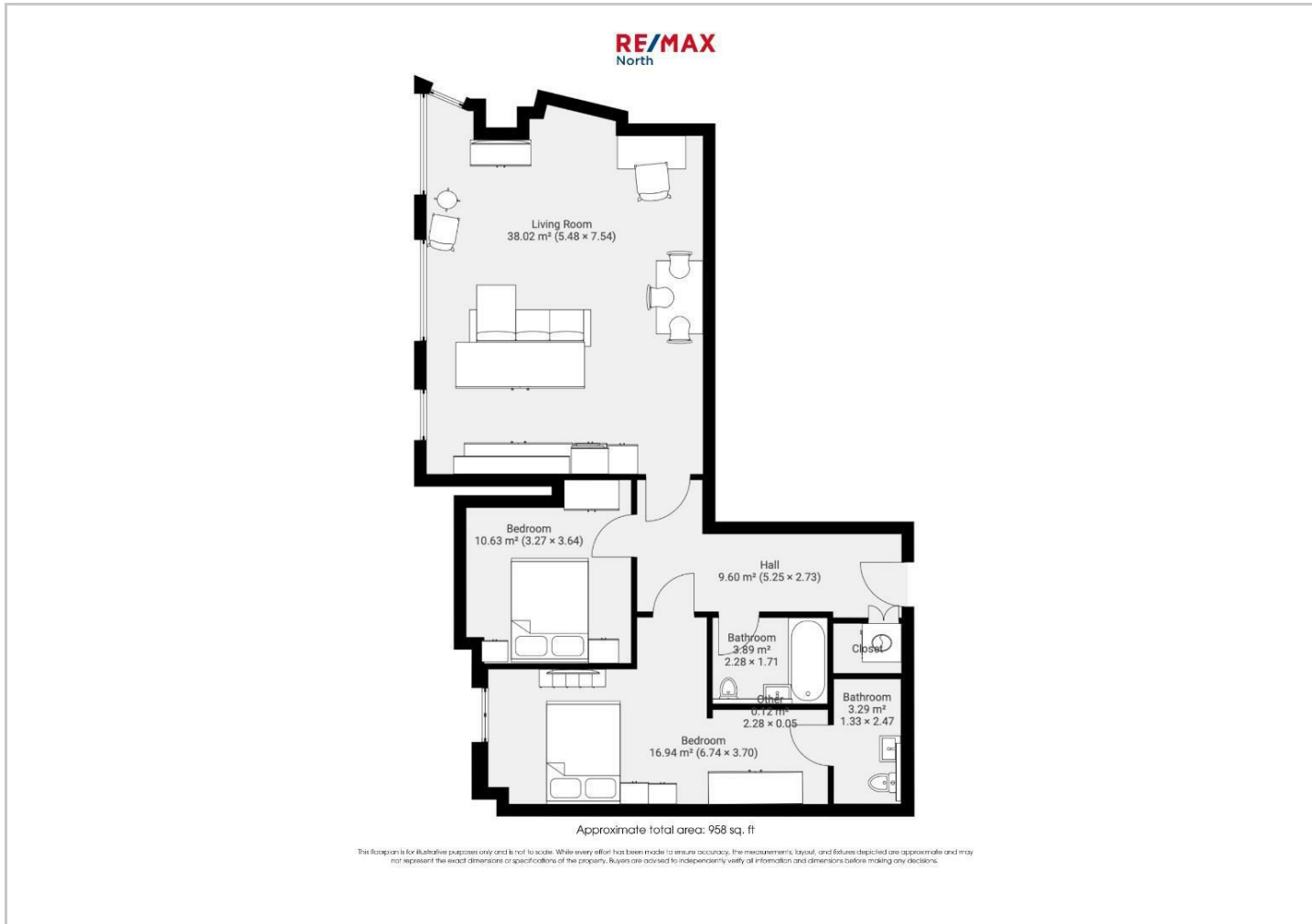
Additional information:
Quarterly service charge £876.05







Floor Plans



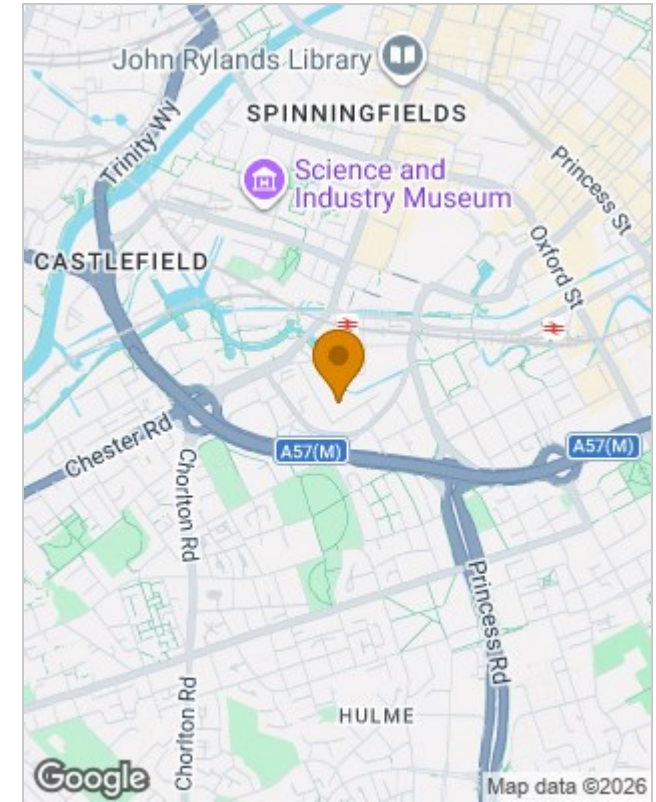
Viewing

Please contact our RE/MAX North Sales Office on +44 (0) 1618 040807 if you wish to arrange a viewing appointment for this property or require further information.

The particulars are set out as a general outline only for the guidance of intended purchasers or lessees, and do not constitute, any part of a contract. Nothing in these particulars shall be deemed to be a statement that the property is in good structural condition or otherwise nor that any of the services, appliances, equipment or facilities are in good working order. Purchasers should satisfy themselves of this prior to purchasing.

94 Phoebe Street, Salford, Greater Manchester, M5 3PH
Tel: +44 (0) 1618 040807 Email: remax.north@remax.co.uk remax.co.uk

Location Map



Energy Performance Graph

