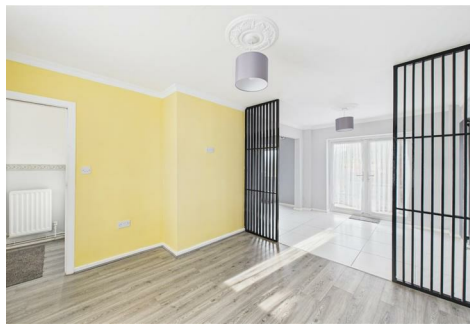
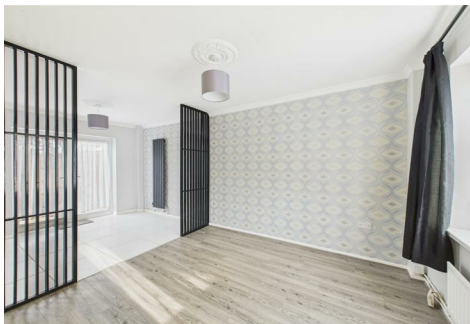




RE/MAX
Prime Estates



25 The Doweries, Rednal, B45 9RY

£1,125 Per month

Stylish Three-Bedroom Mid-Terrace Home in B45

Located in the sought-after B45 area, this well-presented three-bedroom mid-terrace house offers contemporary living in a convenient setting with excellent local amenities and superb transport links to the M42 and M5 motorways.

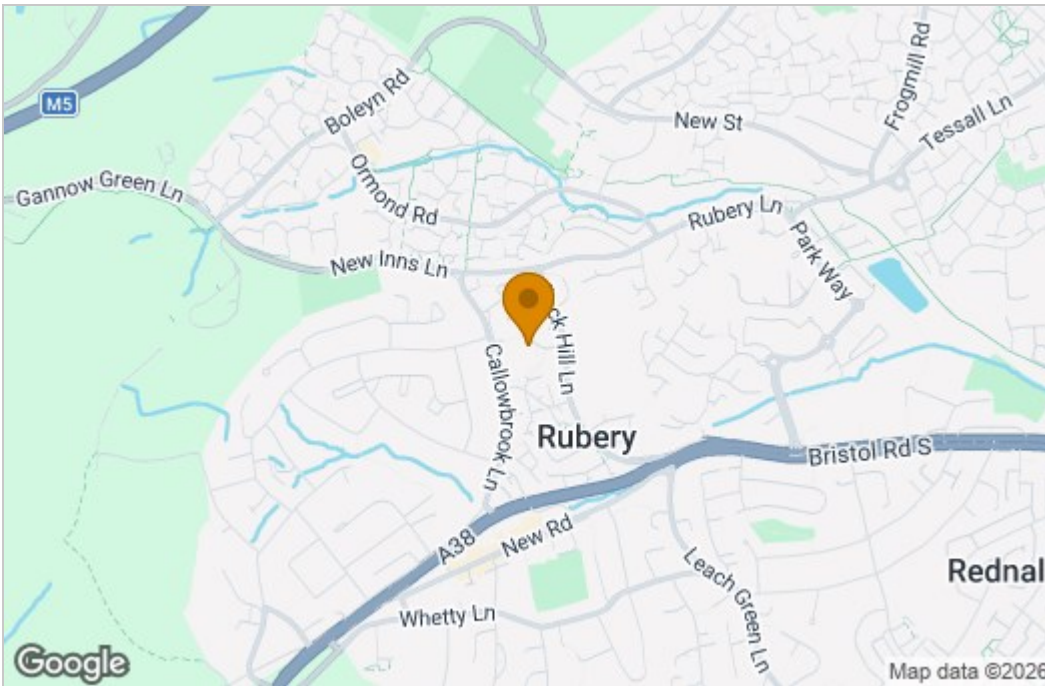
As you enter the property, you're welcomed by a small entrance hallway that leads directly into a bright and spacious lounge. The lounge seamlessly connects to a generous dining area and a sleek, modern kitchen finished in tasteful grey and white tones. The kitchen is fully equipped and boasts patio doors that open onto a good-sized, well-maintained garden—perfect for entertaining or relaxing outdoors.

Adjacent to the kitchen, a practical utility room offers additional space and storage, along with access to a modern downstairs WC complete with wash basin.

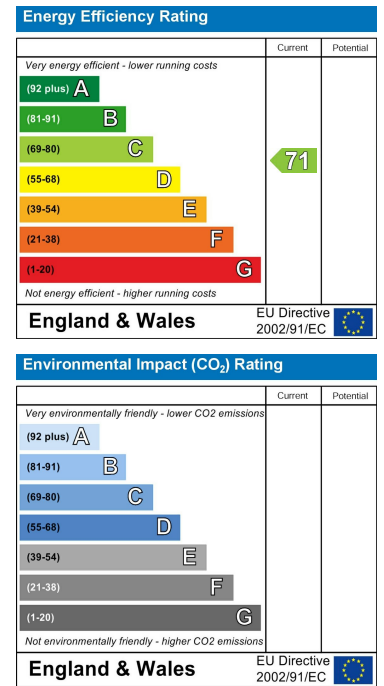
Upstairs, you'll find three well-proportioned bedrooms. The two larger rooms are comfortable doubles, while the third bedroom is ideal as a single bedroom, home office, or walk-in wardrobe—offering great flexibility to suit your lifestyle. The modern family bathroom is stylishly appointed with a shower over the bath and contemporary fittings.

Floor Plan

Area Map



Energy Efficiency Graph



These particulars, whilst believed to be accurate are set out as a general outline only for guidance and do not constitute any part of an offer or contract. Intending purchasers should not rely on them as statements of representation of fact, but must satisfy themselves by inspection or otherwise as to their accuracy. No person in this firm's employment has the authority to make or give any representation or warranty in respect of the property.

Stourbridge, West Midlands, DY8 1DX

Tel: +44 (0) 1384 438457 Email: prime.estates@remax.uk <https://remax.uk/locations/RE-MAX-Prime-Estates>