



RE/MAX
Prime Estates



209 Old Wharf Road, Stourbridge, DY8 4FP

£1,400 Per month

Welcome to this stunning new build property located on Old Wharf Road in the brand new Titan Wharf development. This delightful house boasts a modern design and is perfect for those seeking a comfortable and stylish living space.

As you step inside, you are greeted by a bright and inviting open plan kitchen diner, ideal for entertaining guests or enjoying family meals. The property features one reception room, providing a cosy space to relax and unwind after a long day.

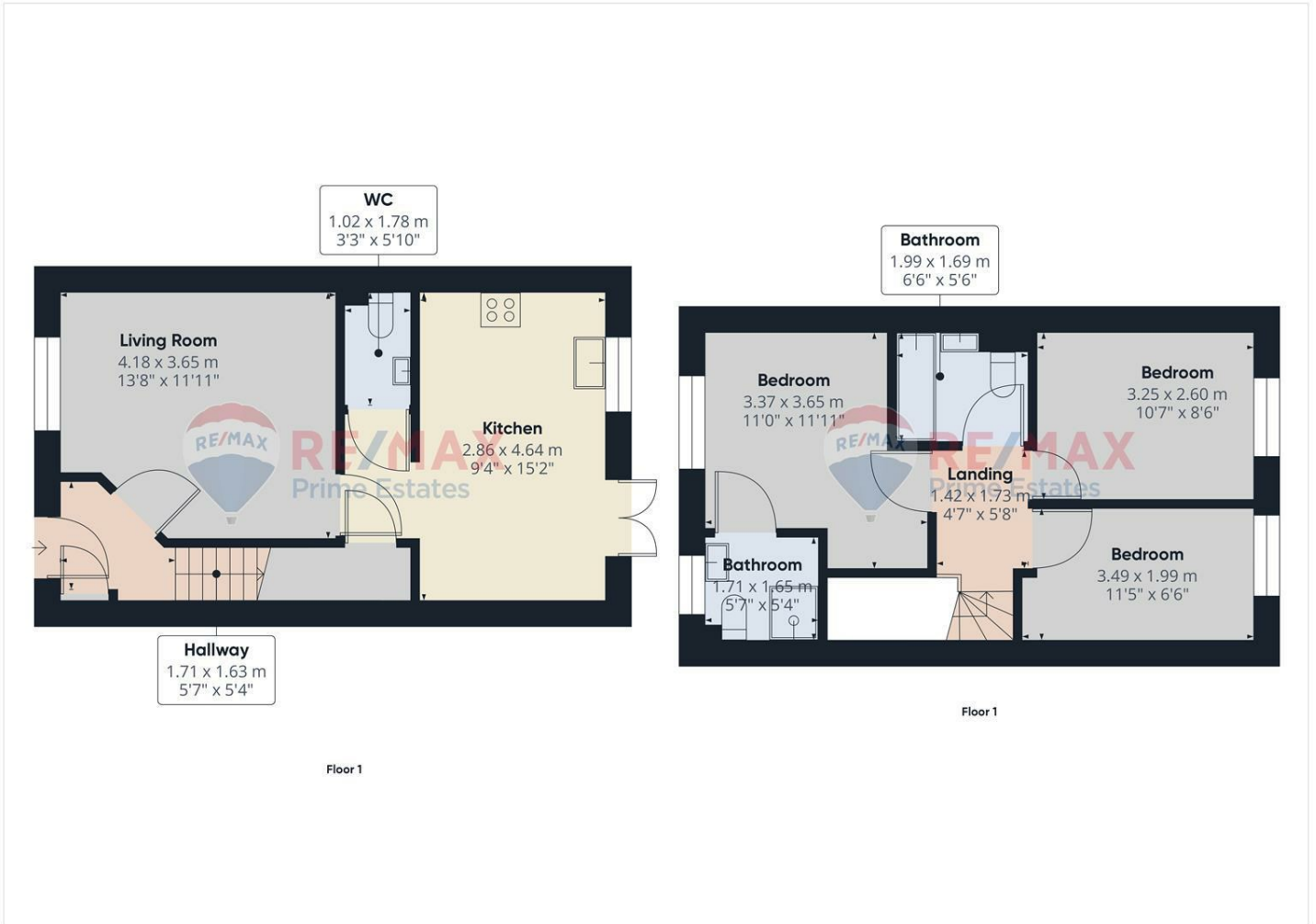
With three spacious bedrooms, there is plenty of room for the whole family to spread out and make themselves at home. The en-suite master bedroom offers a touch of luxury and convenience, ensuring you have your own private sanctuary.

No need to worry about bathroom queues in the morning rush, as this property comes with three bathrooms, making getting ready a breeze for everyone.

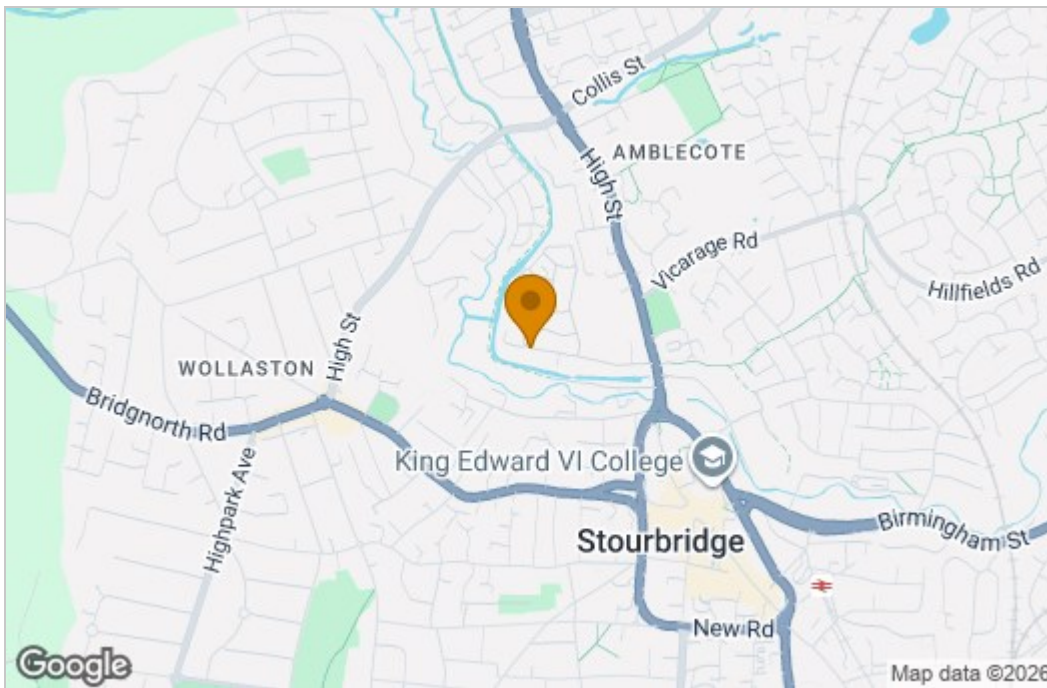
Built in 2024, this house is brand new having never been lived in before. The property's contemporary design and thoughtful layout make it a truly special find in the heart of Stourbridge.

Don't miss out on the opportunity to make this house your home sweet home. Book a viewing today and experience the beauty and comfort this property has to offer.

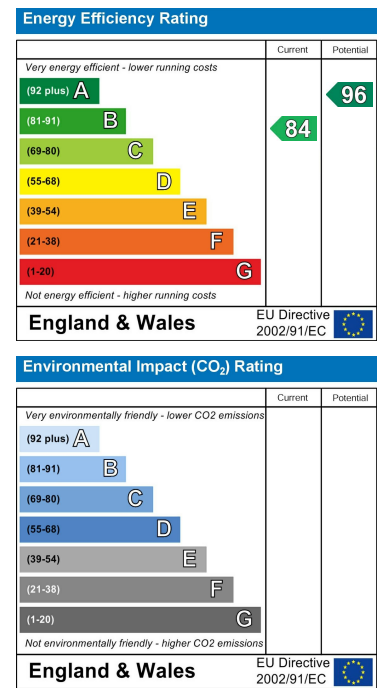
Floor Plan



Area Map



Energy Efficiency Graph



These particulars, whilst believed to be accurate are set out as a general outline only for guidance and do not constitute any part of an offer or contract. Intending purchasers should not rely on them as statements of representation of fact, but must satisfy themselves by inspection or otherwise as to their accuracy. No person in this firm's employment has the authority to make or give any representation or warranty in respect of the property.

Stourbridge, West Midlands, DY8 1DX

Tel: +44 (0) 1384 438457 Email: prime.estates@remax.uk <https://remax.uk/locations/RE-MAX-Prime-Estates>