



RE/MAX
North



60 Metcombe Way, Manchester, M11 3BY

£1,390 Per month





RE/MAX
North

£1,390 Per month

60 Metcombe Way

Manchester, M11 3BY

- Prime location
- Available January 15th
- Private Driveway
- Furnished
- Modern living space
- Generous garden

RE/MAX North is delighted to present this spacious 3-bedroom semi-detached home on Metcombe Way, Manchester, available from 15th January 2025.

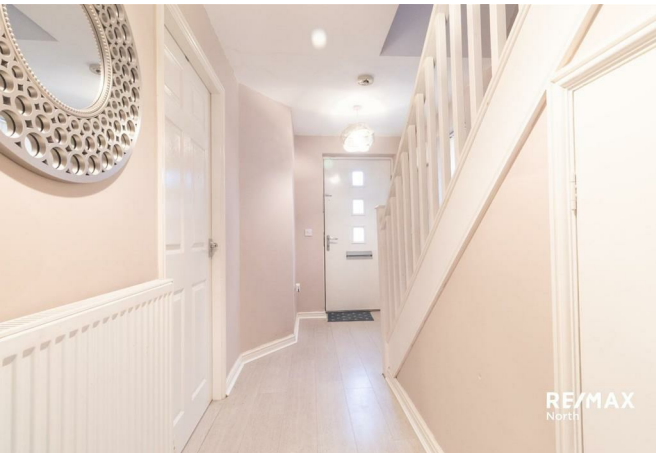
Nestled in a sought-after area near Manchester City's Etihad Campus, this property offers the perfect blend of comfort, convenience, and community. The ground floor features a welcoming hallway, a bright living room, a modern family kitchen with ample base and eye-level units, and a convenient downstairs WC. Upstairs, you'll find three generously sized bedrooms and a family bathroom complete with a shower over the bath.

The property is located in a vibrant neighbourhood with excellent amenities and transport links. It's just a short walk to the Etihad Stadium, making it an ideal home for sports fans or those seeking easy access to major events. For families, nearby schools are well-rated, and local parks such as Philips Park offer green spaces for outdoor activities. Shopping, dining, and leisure options are plentiful, with Manchester city centre just a 10-minute drive or tram ride away. The area is also well-connected by public transport, with frequent bus and tram services running to central Manchester and beyond.

Externally, the property features a private driveway at the front, ensuring off-road parking, and a large rear garden, perfect for relaxing or entertaining.

Council Tax Band: B
Tenancy Term: Minimum 12 months
Deposit: Equivalent to 5 weeks' rent
Furnished

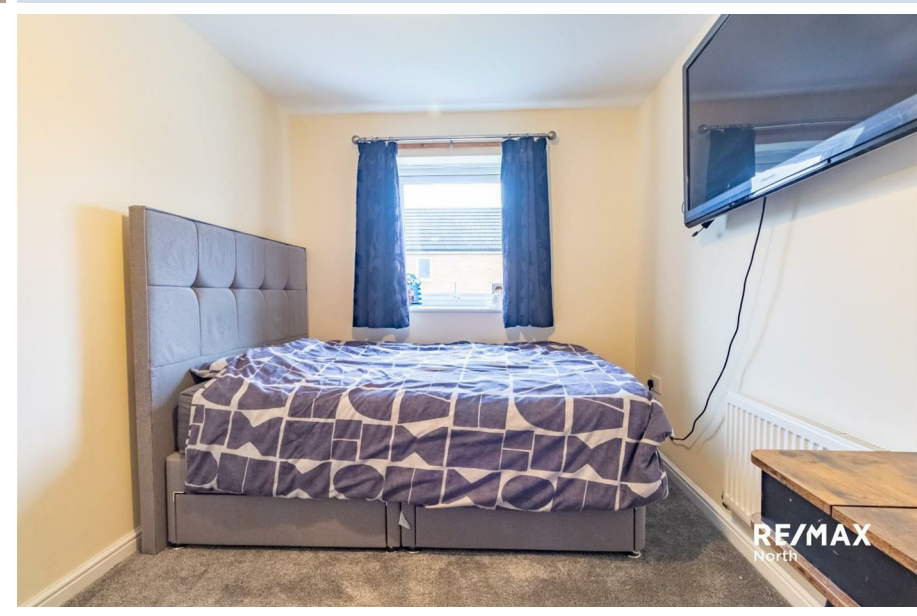
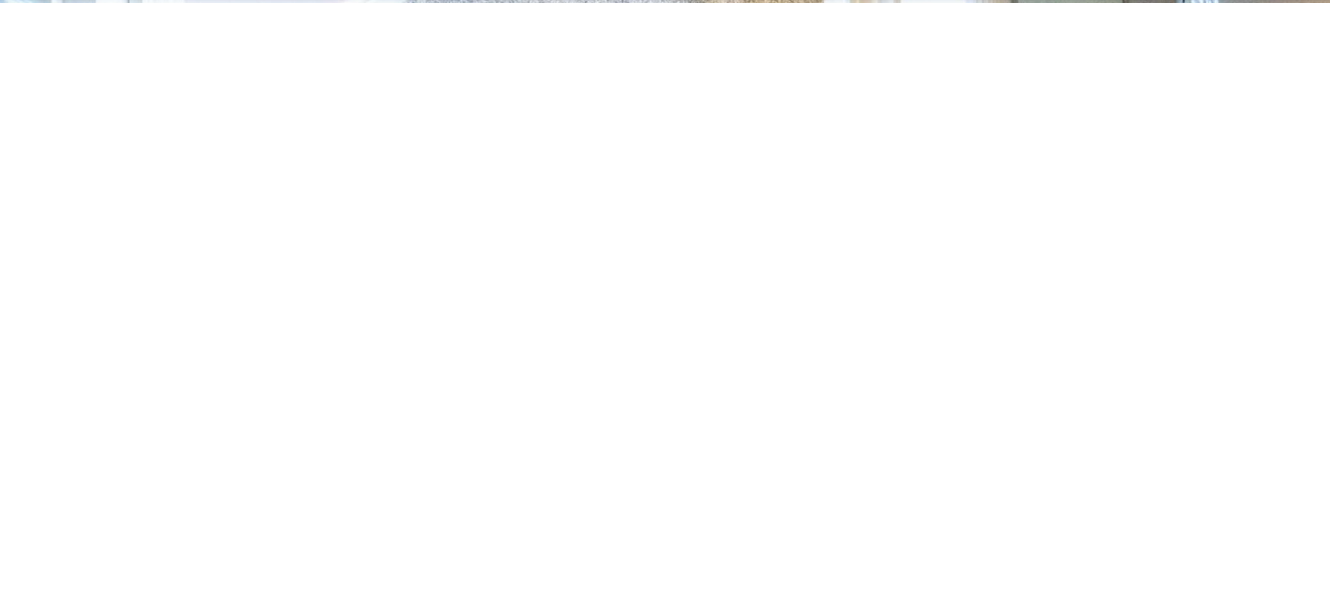
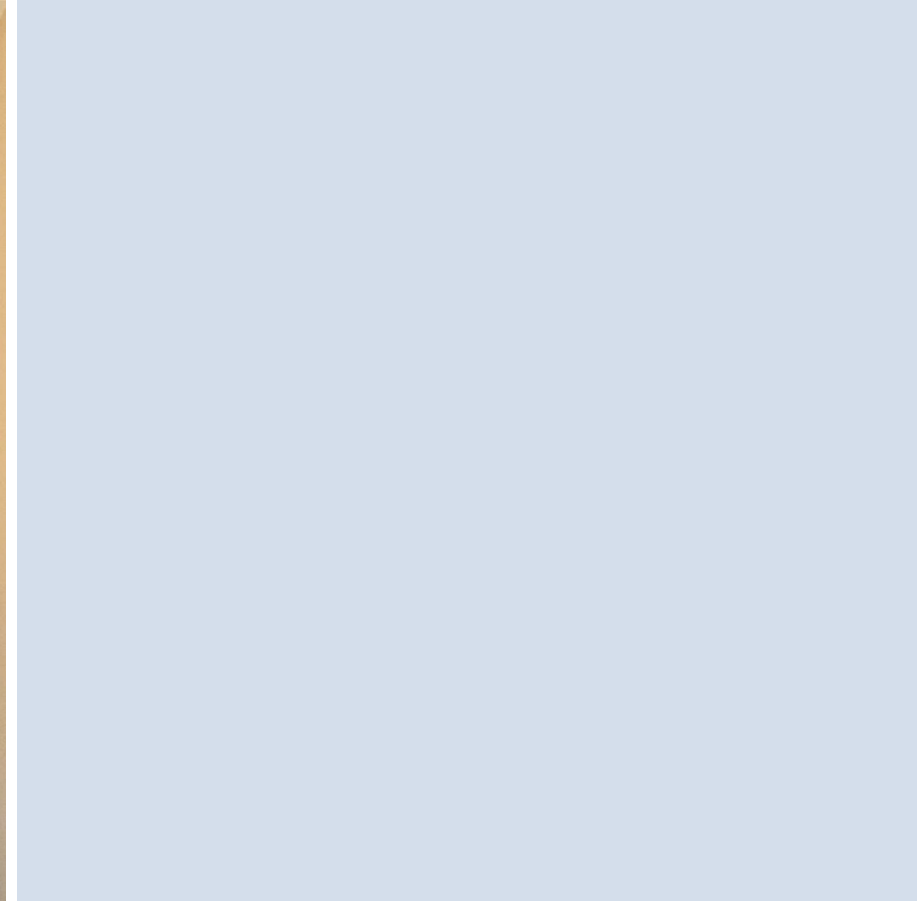
This home offers the ideal combination of space, location, and lifestyle, making it a fantastic choice for families, professionals, or those looking for a peaceful retreat with city-centre convenience. Don't miss this opportunity—enquire now to secure your viewing!



RE/MAX
North

RE/MAX
North

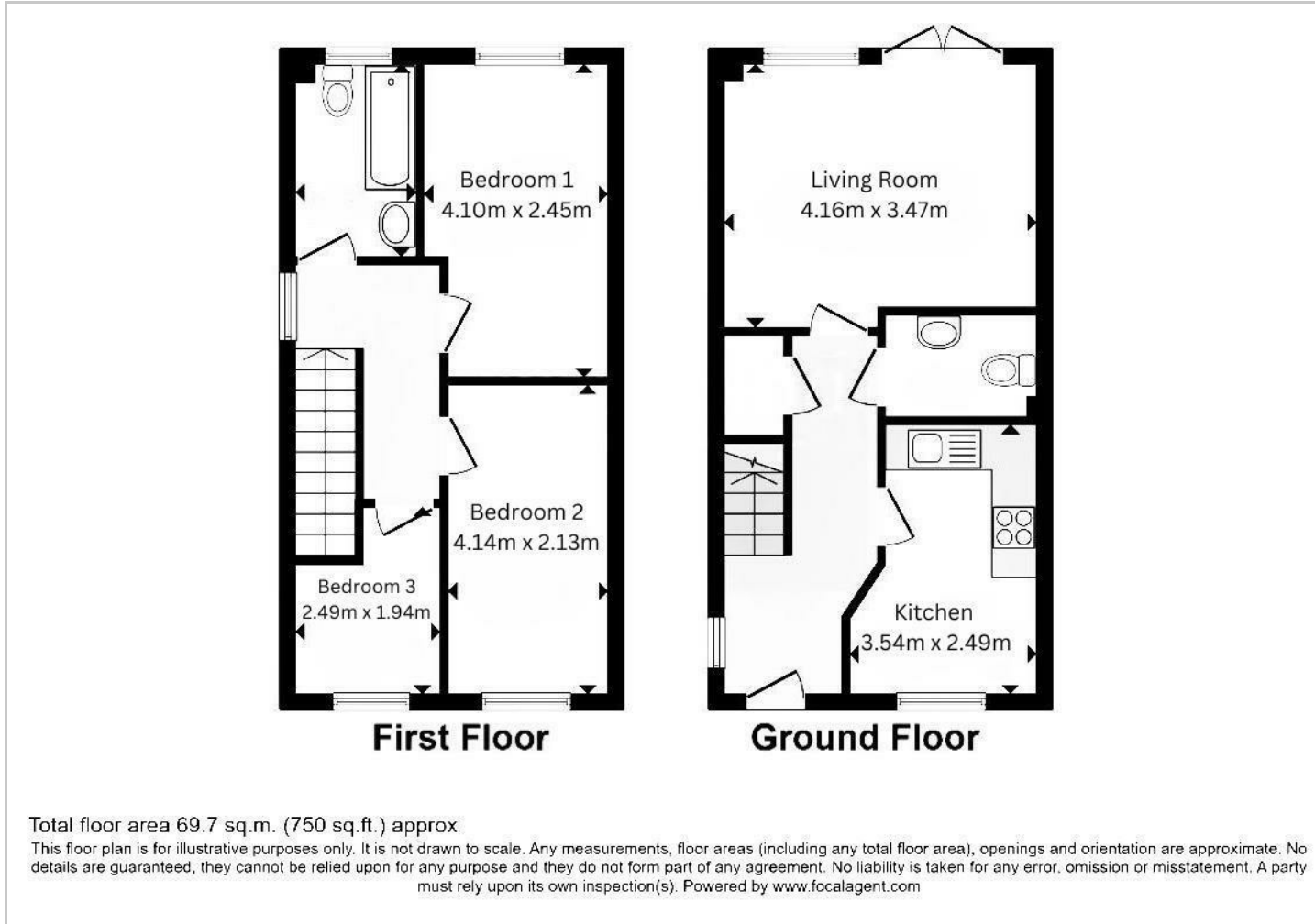
RE/MAX
North





RE/MAX
North

Floor Plans



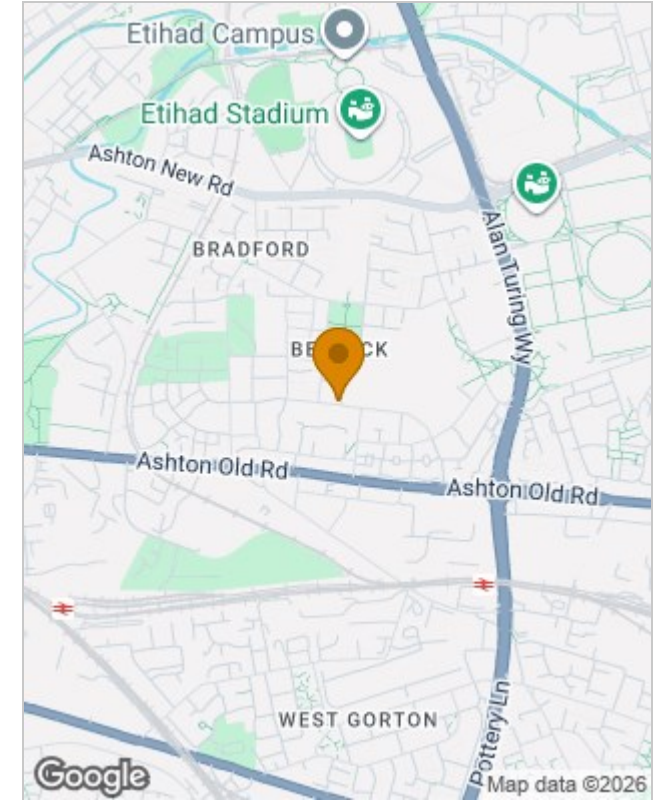
Viewing

Please contact our RE/MAX North Sales Office on +44 (0) 1618 040807 if you wish to arrange a viewing appointment for this property or require further information.

The particulars are set out as a general outline only for the guidance of intended purchasers or lessees, and do not constitute, any part of a contract. Nothing in these particulars shall be deemed to be a statement that the property is in good structural condition or otherwise nor that any of the services, appliances, equipment or facilities are in good working order. Purchasers should satisfy themselves of this prior to purchasing.

94 Phoebe Street, Salford, Greater Manchester, M5 3PH
 Tel: +44 (0) 1618 040807 Email: remax.north@remax.co.uk remax.co.uk

Location Map



Energy Performance Graph

