



RE/MAX
North



6 Burcot Road, Manchester, M11 3DN

£1,350 Per month





£1,350 Per month

6 Burcot Road

Manchester, M11 3DN

- Video Tour Available!
- Modern & Spacious
- Generous Parking
- Ready to move in
- Fully Furnished!
- Prime Location
- Spacious Garden

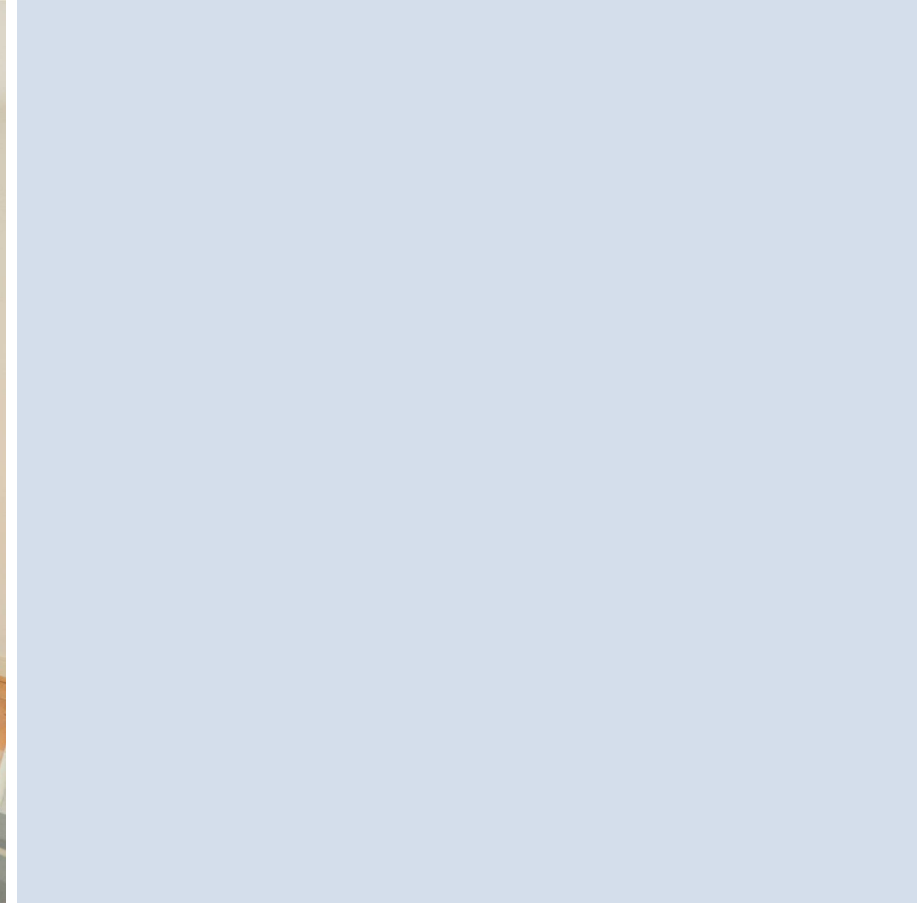
Welcome to this modern and spacious 2-bedroom semi-detached house in the popular area of Beswick, Manchester. Fully furnished and ready for you to move in, this home offers a comfortable and contemporary living environment. Inside, you'll find a well-appointed interior, ensuring that every room is both functional and inviting.

Situated just a short walk from the Etihad Campus and only a 10-minute drive from central Manchester, this property offers excellent access to the city's best amenities while providing a peaceful retreat in a pleasant neighbourhood. The house also features two parking spaces on the driveway, offering convenience for you and your guests.

Outside, you'll discover a large garden complete with a seating area, perfect for relaxing or entertaining. The garden provides an excellent outdoor space where you can enjoy some fresh air in your own private sanctuary.

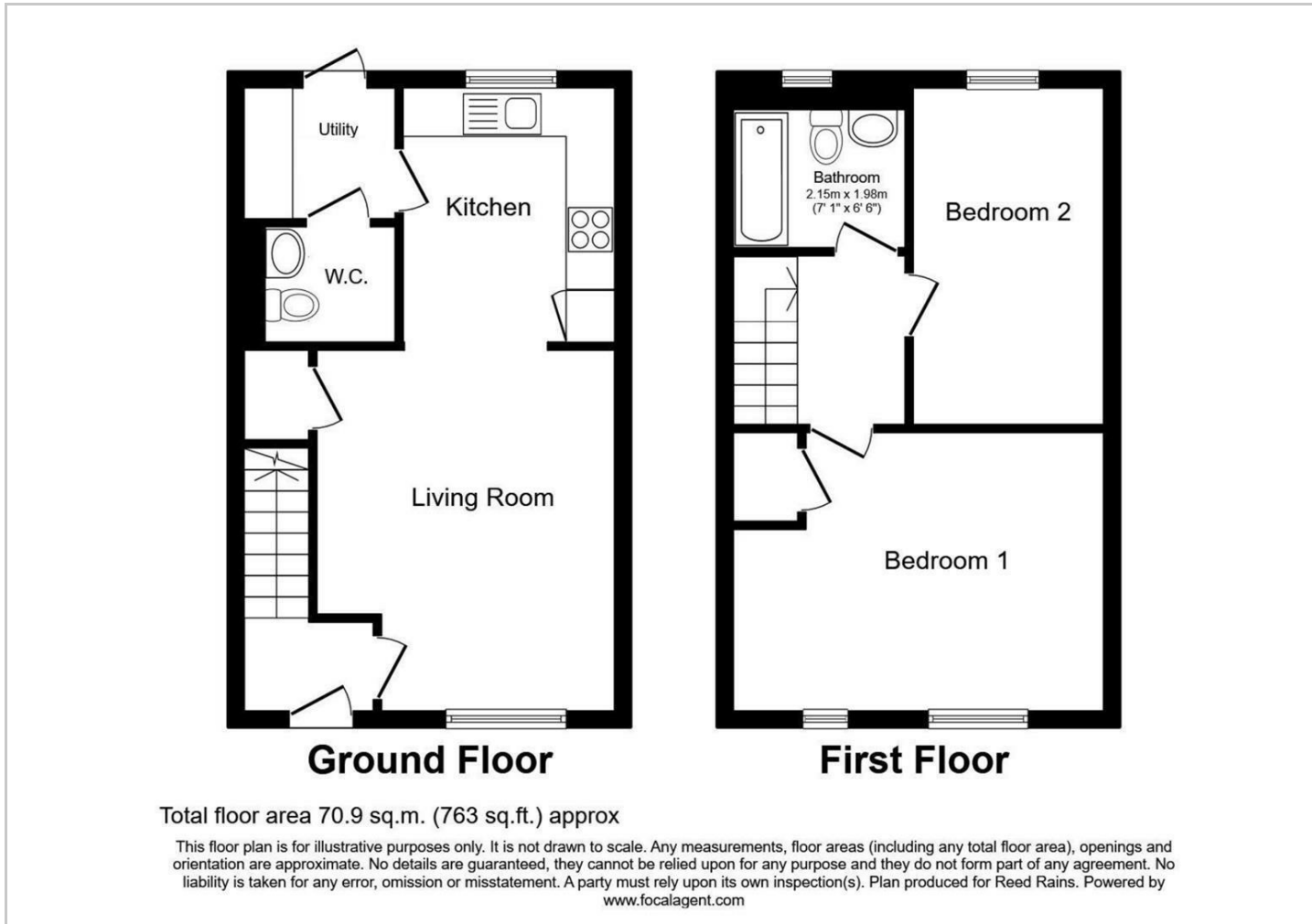
This property is a fantastic opportunity for those seeking a modern, move-in-ready home in a prime location.







Floor Plans



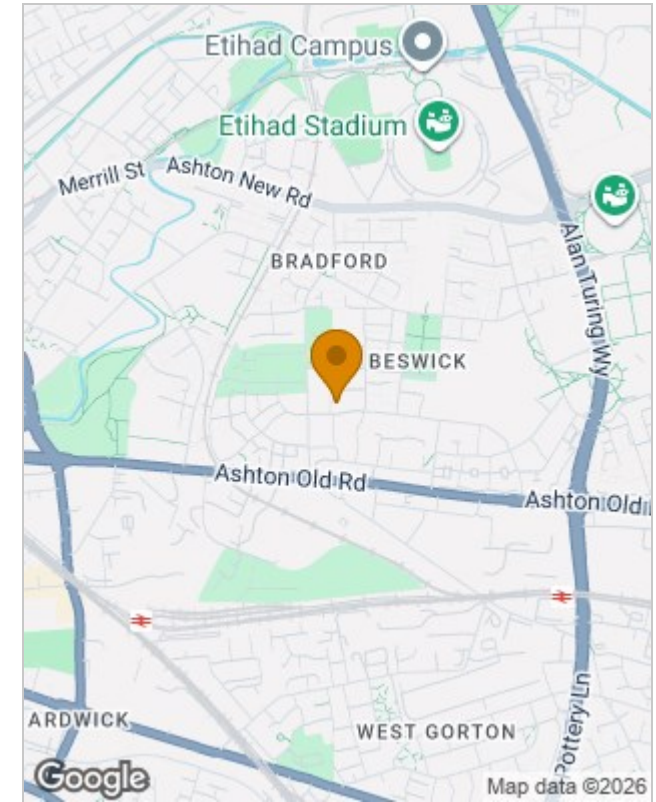
Viewing

Please contact our RE/MAX North Lettings Office on +44 (0) 1618 040807 if you wish to arrange a viewing appointment for this property or require further information.

The particulars are set out as a general outline only for the guidance of intended purchasers or lessees, and do not constitute, any part of a contract. Nothing in these particulars shall be deemed to be a statement that the property is in good structural condition or otherwise nor that any of the services, appliances, equipment or facilities are in good working order. Purchasers should satisfy themselves of this prior to purchasing.

94 Phoebe Street, Salford, Greater Manchester, M5 3PH
 Tel: +44 (0) 1618 040807 Email: remax.north@remax.co.uk remax.co.uk

Location Map



Energy Performance Graph

